

Brick by Brick Malawi

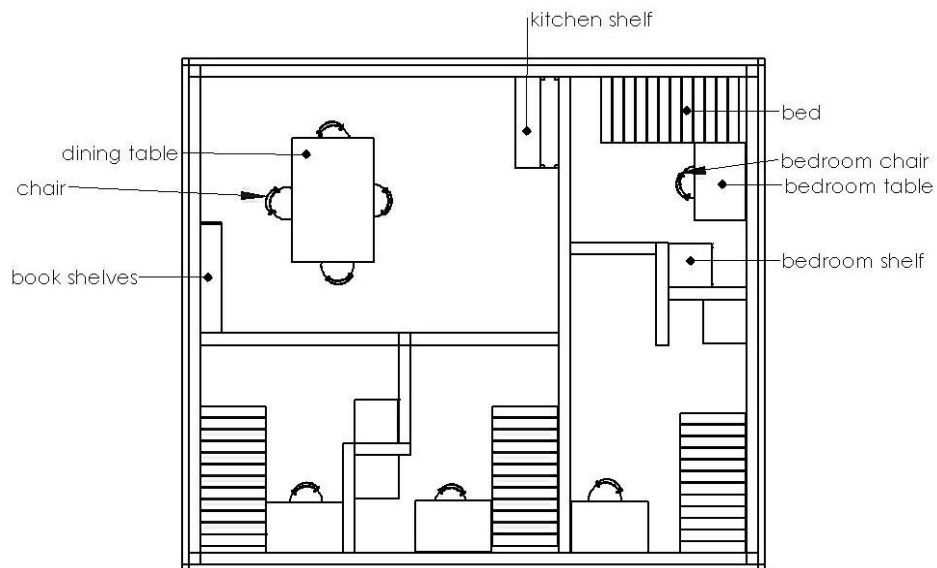
This is a letter to all of those who have donated money to the school project in the village of Mwanani, Malawi.

The school which everyone contributed to has now been running for one year and the second year has begun.



At present we are paying the teachers salary (3000,- kroner or \$500) per year. However the government will consider providing a teacher and salary when there is living accomodation for the teacher. We have therefore been constructing a second building which will accommodate 4 teachers.

Here is a floor plan for this new building.



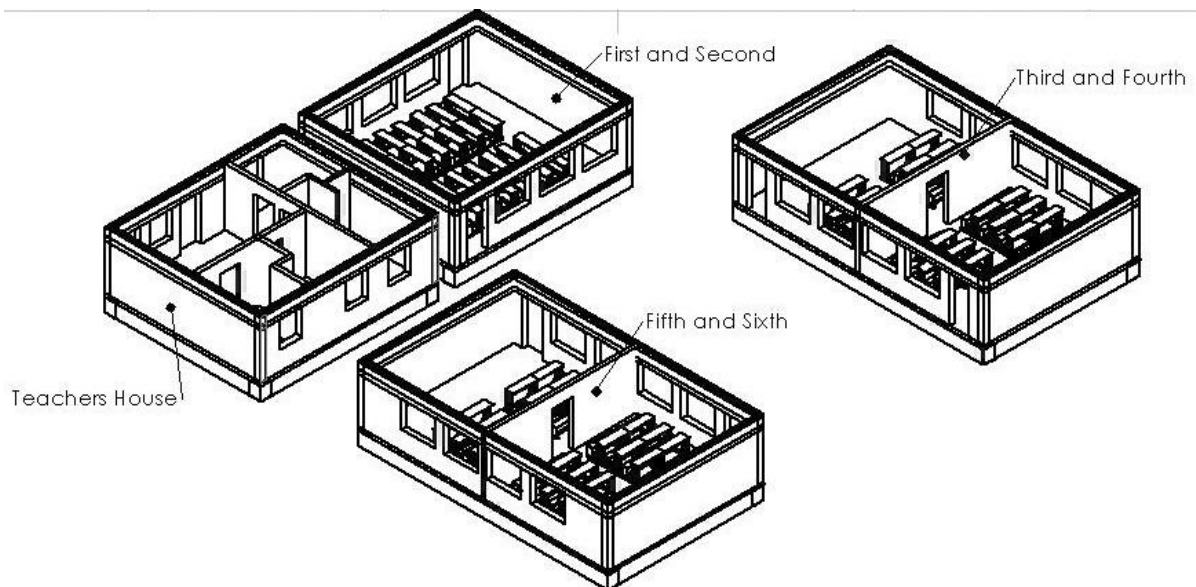
Earlier in the summer the foundation was laid.

Now this building is nearing completion. The roof should be going on in the next couple of weeks.



We have been lucky that the exchange rate between kroner and kwacha has been very favourable. The teacher's accommodation which should have cost 85.000,- NOK (\$15000) was now only 65000,-NOK (\$11000). We will continue to take advantage of these exchange rates as we begin the next phase.

Our next efforts will be to make buildings for the 3rd/4th grades and 5th/6th grades. The collection of buildings will be roughly like the drawings below.



We have started a charity to help finance this phase: <http://www.brickbybrick.no/>
or for English speakers: <http://www.brickbybrick.no/indexE.htm>

Thanks to all of you.

Bruce and Karin